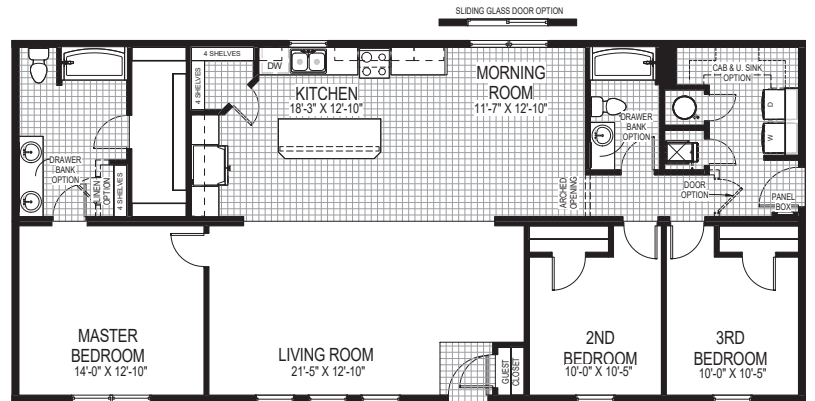
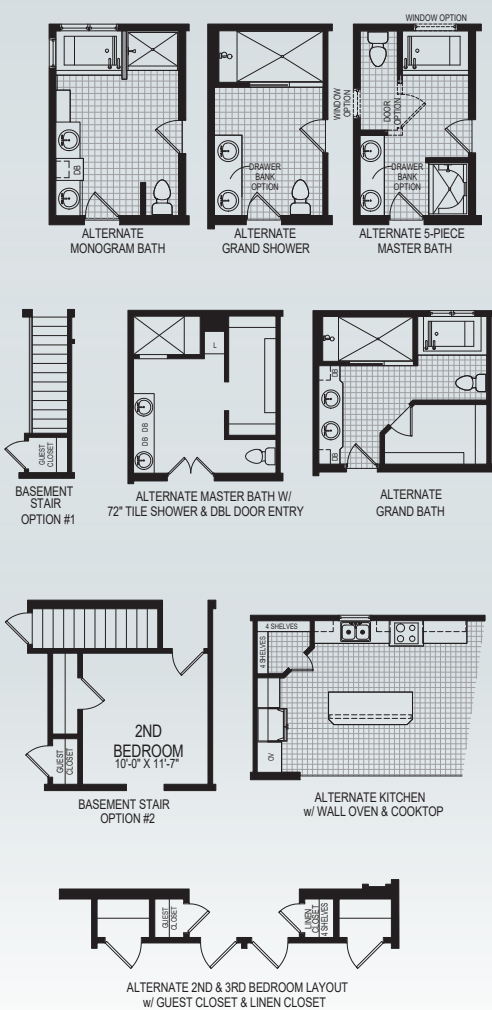




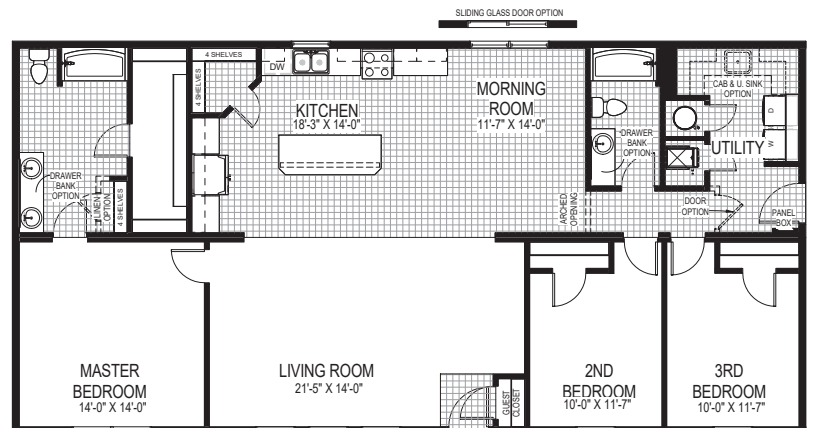
1640 / 1780 Sq. Ft.

The Hazel floor plan provides a great amount of open space amongst the kitchen, morning room, and living room. This plan also allows for a variety of alternate master bath configurations and lends itself well to adding a 7/12 or 9/12 attic option

Hazel



1640 Sq. Ft.
27'4" x 60'0"



1780 Sq. Ft.
29'8" x 60'0"